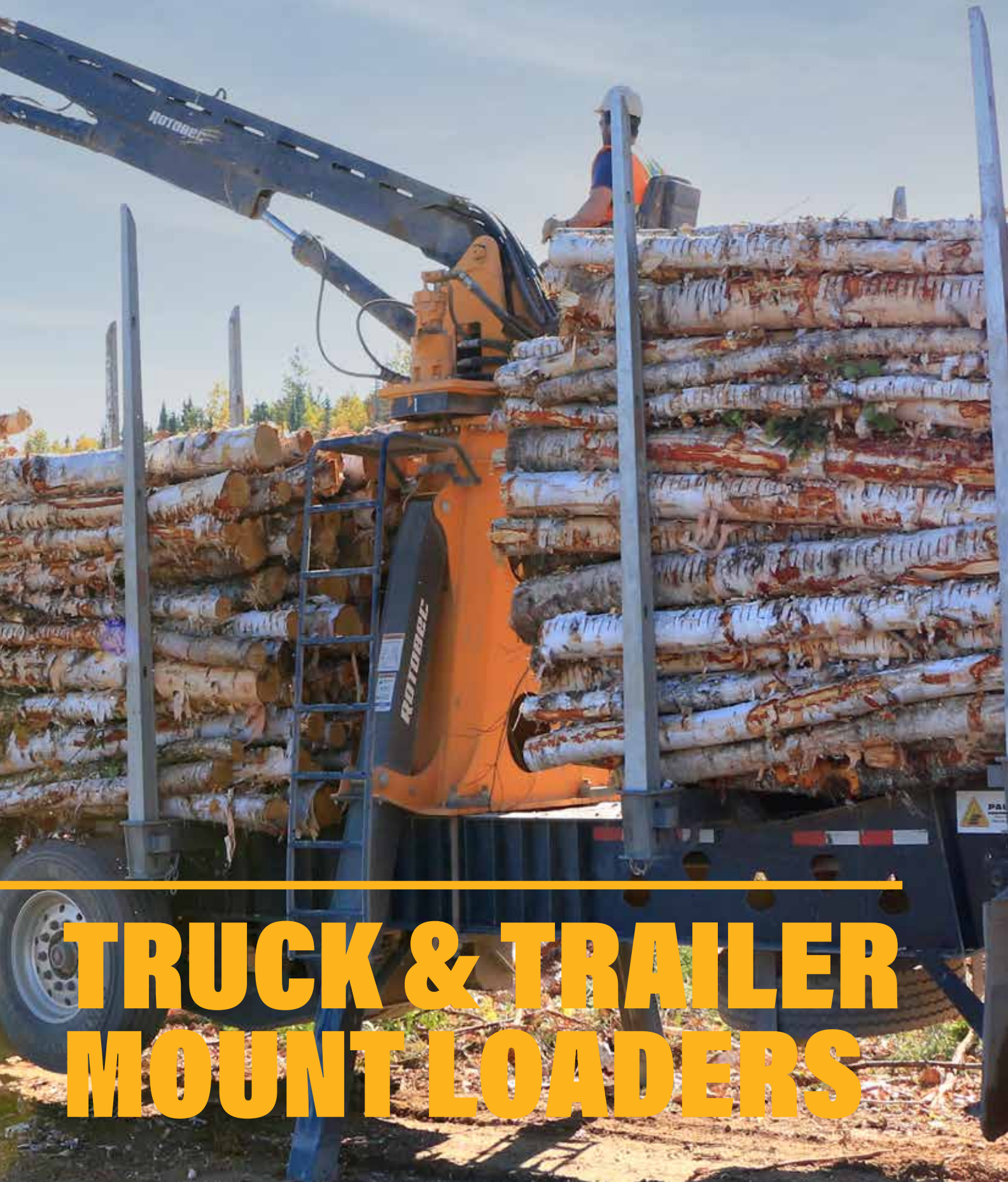


ROTOBEC



**TRUCK & TRAILER
MOUNT LOADERS**

**CHANGING
THE INDUSTRY
ONE LOADER
AT A TIME.**



A large pile of cut logs in a forest. In the background, a hydraulic grapple loader is visible, with the word "DEGAGEZ" on its arm. The scene is set in a wooded area with sunlight filtering through the trees.

LEADING THE WAY

From humble beginnings to industry leader, Rotobec has proven itself through decades of expertise, innovation, and knowledge to bring you world-class quality and design. Whether it be in forestry, trash, scrap or in the rail sector, our Elite loaders have transformed them all.

We are proud to design and manufacture almost every component of our products at our production facilities in Sainte-Justine, Quebec (Canada) and in Littleton, New Hampshire (USA). The most advanced technologies are used throughout the process and the result is simply the best material handling equipment available.

Unbeatable quality and nothing less. It's about giving it our all and raising the bar. This is the promise Rotobec has been delivering throughout the years wherever you are in the world. We have worked hard for you and today Rotobec products are globally recognized and trusted, making us a world leader in the industry.

We are Rotobec.

**BE PART
OF THE
WORLD'S
ELITE.**



A black hydraulic loader arm with a grapple attachment is lifting a large, rough-textured log. The arm has a "STAY CLEAR" warning label. The background shows a wooded area and a pile of logs in a lumber yard.

THE LIGHTEST LOADER

The Rotobec Elite loaders are some of the lightest available out there. Our Elite 910 is the lightest of both models and the most agile. You can easily use them in every industry in a variety of applications. Its precision and agility make it the ideal machine for everything including log loading and unloading of trucks. With better fuel efficiency, more weight available for materials on your truck or trailer, and the industry's lowest total cost of ownership, it leaves more money in your pocket.

UNMATCHED SPEED AND AGILITY

Spend less time repositioning your loader and more time on what matters most. Working. No matter what the application is, the Elite is the right fit for the job. Rotobec Elite loaders are commonly used for disaster clean-up and, in some regions, for roadside waste collection. The speed of the machine will definitely give you the ultimate efficiency you are looking for. With a lightning-fast loader, you will move more in less time than ever before.





A LITTLE GIANT WITH **UNBEATABLE STRENGTH**

Without question, the Rotobec Elite loader is the most versatile, robust and longest lasting knuckleboom loader of its size ever made. Our Elite loader is fit for every application, including scrap collection and transportation, recycling materials, and processing facilities. The lightweight design of the Elite series, combined with an incredible max lift capacity, make these two loaders the undisputed heavyweight champions in their weight class, with the Elite 915 being the strongest and most robust of the two models. You can lift more with less than you have ever imagined.





**STEP UP
YOUR
LOADING
GAME.**

UNPARALLELED PRECISION

Rail application may seem a bit more unusual, but not for the Rotobec Elite loader. Railway maintenance, including delivery and cleanup of components, needs smooth movement for increased precision. The clever design of our hydraulic system allows the Elite loaders to achieve unmatched levels of precision making them a dream to operate. Whether you're a rookie or a seasoned vet, these loaders will make even the most inexperienced operator look like a pro. We know precision matters.





**NO TIME
FOR
DOWNTIME.**



The Elite and nearly all of its components are designed and manufactured at our North American production facilities. We are dedicated to providing you with the most durable and reliable loaders on the market. Because we manufacture everything in house, our parts availability is second to none throughout our extensive dealer network and our service team is committed to ensuring that your loader is running at maximum capacity at all times.

QUALITY COMPONENTS.

Each component of the Elite log loader is manufactured in house using the highest quality materials. Our components are built with one purpose: To outperform and outlast the competition.

SERVICE MADE SIMPLE.

Rotobec engineers have designed the Elite in a way that makes it incredibly simple to service. With no need for special tools, the Elite can even be serviced in the field, maximizing your machine uptime.



ELITE 910

TECHNICAL DATA

KEY SPECIFICATIONS—ELITE 910

Structure	Main boom: Rectangular 6" x 8" (152.4 mm x 203.2 mm) structure made of high-tensile steel Stick boom: Rectangular 6" x 6" (152.4 mm x 152.4 mm) structure made of high-tensile steel
Pivots	2" (50.8 mm) dia. heat-treated and chromed pins mounted on bronze bushings
Kick-Out Stabilizers	Cylinder: 3" (76.2 mm) bore dia., 2" (50.8 mm) rod dia.
Complete motion	Main boom: 8.9 sec w/18.5 gpm (70 lpm) Stick boom: 7.0 sec w/18.5 gpm (70 lpm)
Slewing ring	26.45" (671.83 mm) outside diameter
Rotation speed	9.5 rpm
Weight	4,940 lbs (2,241 kg) [with standard boom]
Operating pressure	3,045 psi (210 bar)
Swing torque	Theoretical: 15,987 ft. lb (21,675 Nm) @ 3,200 psi (207 bar) Actual: Estimated at 13,589 ft. lb (18,424 Nm)

BOOM LENGTH OPTIONS—ELITE 910

Standard	22' (6.7 m)
Non-telescopic	20'6" to 25' (6.25 m to 7.62 m) [other lengths available upon request]
Telescopic	25'6" to 29' (7.77 m to 8.84 m) [other lengths available upon request]

ELITE 910 [M-22 ft. / M-6.7 m]

LOADER LIFT CAPACITY (lb/kg)

		DISTANCE FROM CENTER OF ROTATION (ft./m)			
ELITE 910 T&T	HEIGHT	5 ft. / 1.5 m	10 ft. / 3 m	15 ft. / 4.5 m	20 ft. / 6 m
	30 ft. / 9 m		6,520 / 2,960		
	25 ft. / 7.5 m			5,200 / 2,365	
	20 ft. / 6 m			5,280 / 2,425	3,920 / 1,780*
	15 ft. / 4.5 m	7,660 / 3,860*	7,690 / 3,560	5,660 / 2,610	4,380 / 1,990
	10 ft. / 3 m	3,580 / 1,535*	8,760 / 4,040	5,880 / 2,710	4,140 / 1,920
	5 ft. / 1.5 m	5,380 / 2,415*	8,140 / 3,735	5,340 / 2,465	3,060 / 1,470
	0 ft. / 0 m		5,480 / 2,520	3,380 / 1,585	

-Lifting capacities calculated at 100% operating pressure.

*Lifting capacity is limited by stick boom hydraulic capacity.

***Maximum load that must never be exceeded = 8,750 lb (3,970 kg).

We reserve the right to change specifications and improve our products without notice or obligation.

FEATURES AND OPTIONS—ELITE 910

Swing System	Continuous 360° rotation Pedal activated rotation Locking mechanism for transportation mode
Boom	Induction tempered, chrome steel pins on bronze bushings Telescopic booms activated by electric button and proportionately controlled by lever Designed for closer access to loader frame 2 x 55 W halogen work lights Main boom cylinder: 5" (127 mm) bore, 3" (76.2 mm) rod Stick boom cylinder: 5" (127 mm) bore, 2.5" (63.5 mm) rod
Cylinders	Bolt-on head Wear ring Chrome plated tempered steel rod
Hydraulic System	Double function joystick 2 x 19 gpm (72 lpm) @ 1,800 rpm pump flow 8 port hydraulic oil manifold

ELITE 915

TECHNICAL DATA

KEY SPECIFICATIONS—ELITE 915

Structure	Main boom: Rectangular 7" x 8.25" (177.8 mm x 209.5 mm) structure made of high-tensile steel Stick boom: Rectangular 6" x 6" (152.4 mm x 152.4 mm) structure made of high-tensile steel
Pivots	2" (50.8 mm) dia. heat-treated and chromed pins mounted on bronze bushings
Kick-Out Stabilizers	Cylinder: 3.5" (88.9 mm) bore dia., 2.25" (57.2 mm) rod dia.
Complete motion	Main boom: 9 sec w/22 gpm (83 lpm) Stick boom: 8 sec w/22 gpm (83 lpm)
Slewing ring	28" (711.2 mm) outside diameter
Rotation speed	8 rpm
Weight	6,011 lbs (2,726 kg) [with standard boom]
Operating pressure	3,200 psi (221 bar)
Swing torque	Theoretical: 16,542 ft. lb (22,428 Nm) @ 3,200 psi (221 bar) Actual: Estimated at 14,391 ft. lb (19,512 Nm)

BOOM LENGTH OPTIONS—ELITE 915

Standard	23' to 25' (7 m to 7.62 m) [other lengths available upon request]
Telescopic	26'4" to 30' (8 m to 8.14 m) [other lengths available upon request]

ELITE 915 [M-23 ft. / M-7 m]

LOADER LIFT CAPACITY (lb/kg)

		DISTANCE FROM CENTER OF ROTATION (ft./m)			
ELITE 915 T&T	HEIGHT	5 ft. / 1.5 m	10 ft. / 3 m	15 ft. / 4.5 m	20 ft. / 6 m
	30 ft. / 9 m			4,500 / 2,730*	
	25 ft. / 7.5 m			5,490 / 2,500	
	20 ft. / 6 m		6,680 / 3,090	5,760 / 2,645	5,090 / 2,330
	15 ft. / 4.5 m	10,960 / 4,970***	8,660 / 4,025	6,430 / 2,965	5,220 / 2,400
	10 ft. / 3 m	2,160 / 950*	10,390 / 4,800	7,000 / 3,230	5,240 / 2,420
	5 ft. / 1.5 m	5,060 / 2,280*	10,300 / 4,735	6,860 / 3,160	4,650 / 2,170
	0 ft. / 0 m	8,720 / 3,915*	8,160 / 3,745	5,380 / 2,495	

-Lifting capacities calculated at 100% operating pressure.

*Lifting capacity is limited by stick boom hydraulic capacity.

***Maximum load that must never be exceeded = 10,960 lb (4,970 kg).

We reserve the right to change specifications and improve our products without notice or obligation.

FEATURES AND OPTIONS—ELITE 915

Swing System	Continuous 360° rotation Pedal activated rotation Locking mechanism for transportation mode
Boom	Induction tempered, chrome steel pins on bronze bushings Telescopic booms activated by electric button and proportionately controlled by lever Designed for closer access to loader frame 2 x 55 W halogen work lights Main/Stick boom cylinder: 5" (127 mm) bore, 3" (76.2 mm) rod
Cylinders	Bolt-on head Wear ring Chrome plated tempered steel rod
Hydraulic System	Double function joystick 2 x 18.5 gpm (70 lpm) @ 1800 rpm 8 port hydraulic oil manifold

AVAILABLE ACCESSORIES AND OPTIONS



DELUXE LADDER



LED LIGHTS



HEATED JOYSTICKS



HYDRAULIC COOLER



FOLD-DOWN CAB

COMMON ATTACHMENTS USED WITH ELITE LOADERS



LOG GRAPPLE



PULPWOOD GRAPPLE



BUNCHING GRAPPLE



WASTE GRAPPLE



POLY GRAB GRAPPLE



LOOSE TIE GRAPPLE



ROTOBEC

■ At Rotobec, we are not (and will never be) afraid to say it out loud: **we are the best!**

The reason is simple. Just like you, we have earned this position. And just like you, we work hard every single day to keep it. From dawn to dusk. Just like you, we know that the best things in life are tough earned.

That's why we never take anything for granted; a reputation, the number of fans on Facebook, a safe place in the industry, the trust of the dealers, the satisfaction of the customers, the comfort of the team, the perfection of a piece of equipment. It's about giving it our all and raising the bar. Doing better, pushing harder, going further.

That is how we achieve to build the most trustworthy equipment and relationships in the business. Why accept less? **You deserve what's best.** The industry deserves what's best. The world deserves what's best.

So together, let's aim higher. If it doesn't exist, we'll create it. We can do better, let's do it. When the horizon gets tough, we keep going.

We are Rotobec!



ROTOBEC

CONTACT US

Eastern Canada & International

200 rue Industrielle
Sainte-Justine, QC CANADA
G0R 1Y0
T. (418) 383-3002

Eastern & Central USA

162 Rotobec Drive
Littleton, NH USA
03561
T. (603) 444-2103

Southern USA

1225 E Crosby Rd #17
Carrollton, TX USA
75006
T. (972) 242-9514

Western Canada & USA

10-2660 Kyle Rd
West Kelowna, BC CANADA
V1Z 2N1
T. (250) 765-1161

Brazil

Rua Carlos Essenfelder, 952
Bairro Boqueirão, Curitiba Paraná
CEP 81650-090
T. (41) 3287-2835