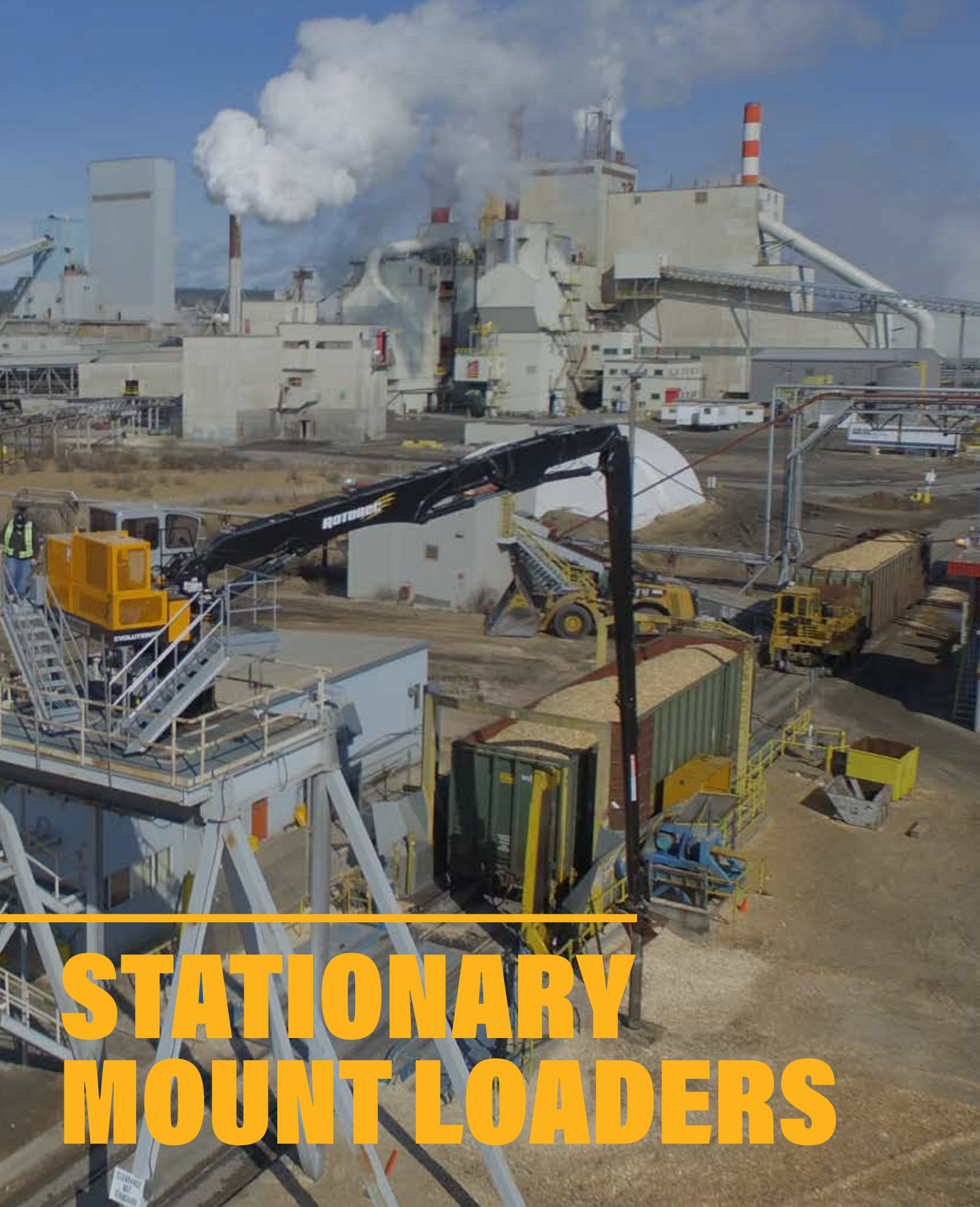


ROTOBEC



**STATIONARY
MOUNT LOADERS**

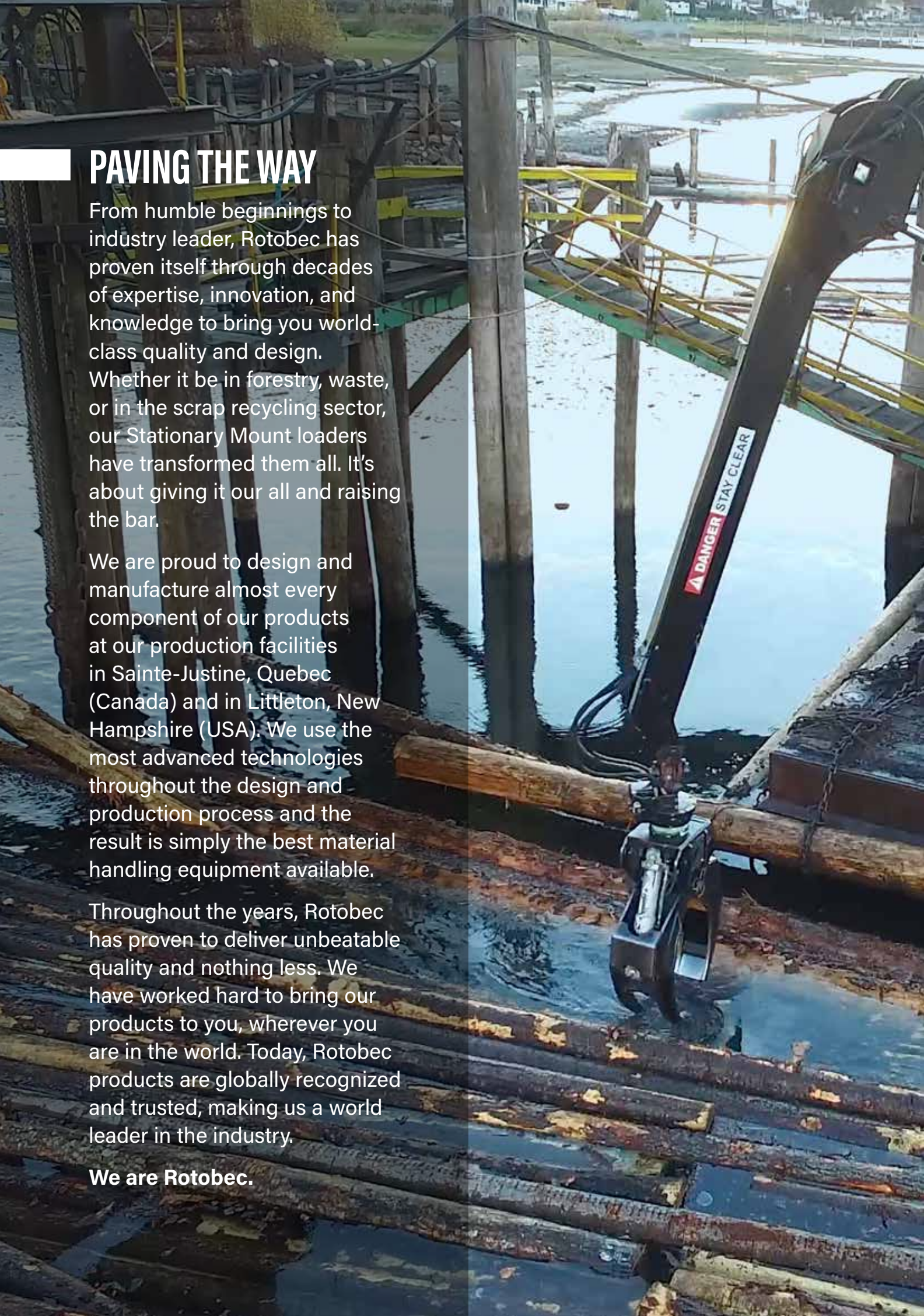
PAVING THE WAY

From humble beginnings to industry leader, Rotobec has proven itself through decades of expertise, innovation, and knowledge to bring you world-class quality and design. Whether it be in forestry, waste, or in the scrap recycling sector, our Stationary Mount loaders have transformed them all. It's about giving it our all and raising the bar.

We are proud to design and manufacture almost every component of our products at our production facilities in Sainte-Justine, Quebec (Canada) and in Littleton, New Hampshire (USA). We use the most advanced technologies throughout the design and production process and the result is simply the best material handling equipment available.

Throughout the years, Rotobec has proven to deliver unbeatable quality and nothing less. We have worked hard to bring our products to you, wherever you are in the world. Today, Rotobec products are globally recognized and trusted, making us a world leader in the industry.

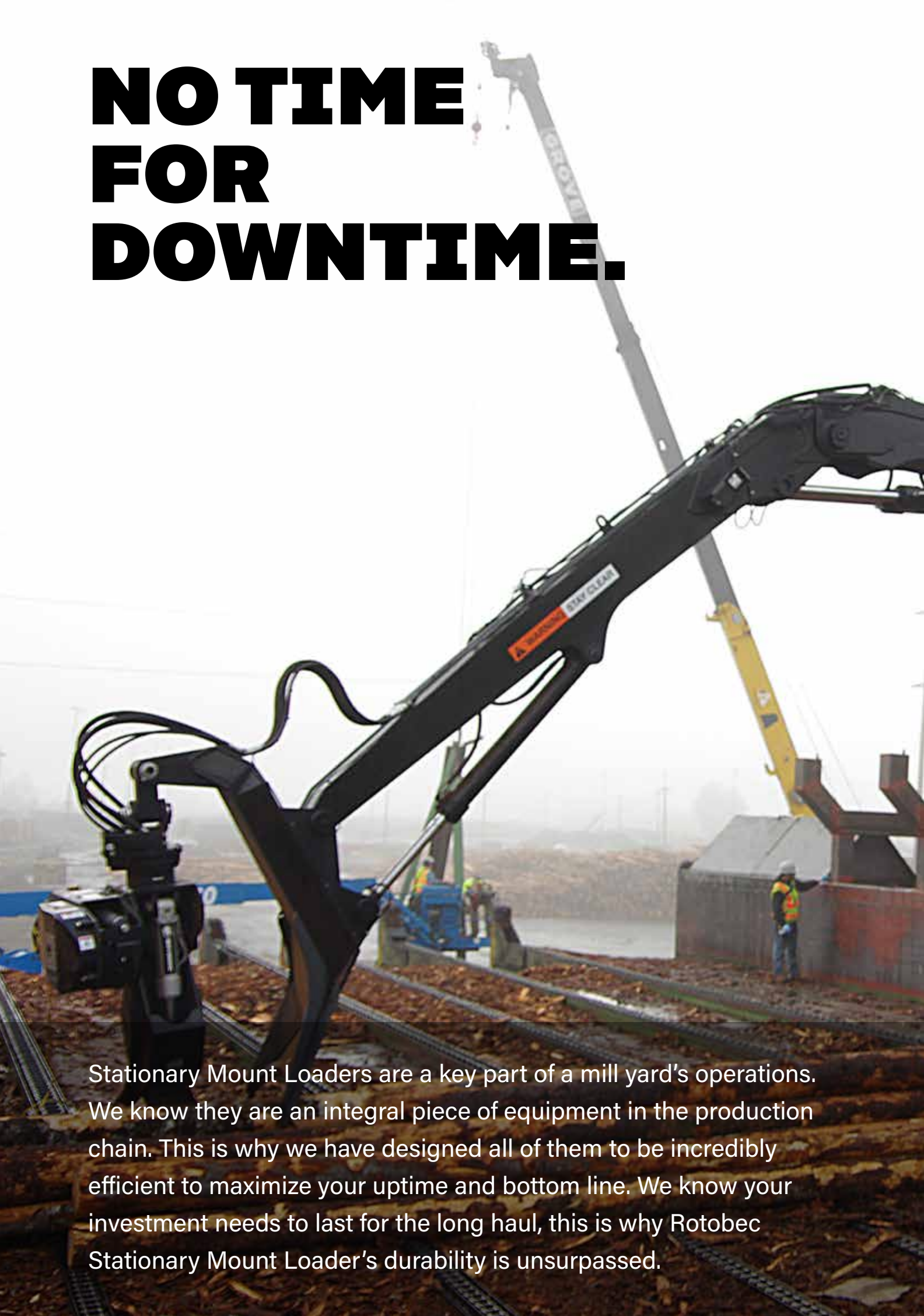
We are Rotobec.





**TAILORED
TO YOUR NEEDS
SINCE DAY ONE.**

NO TIME FOR DOWNTIME.



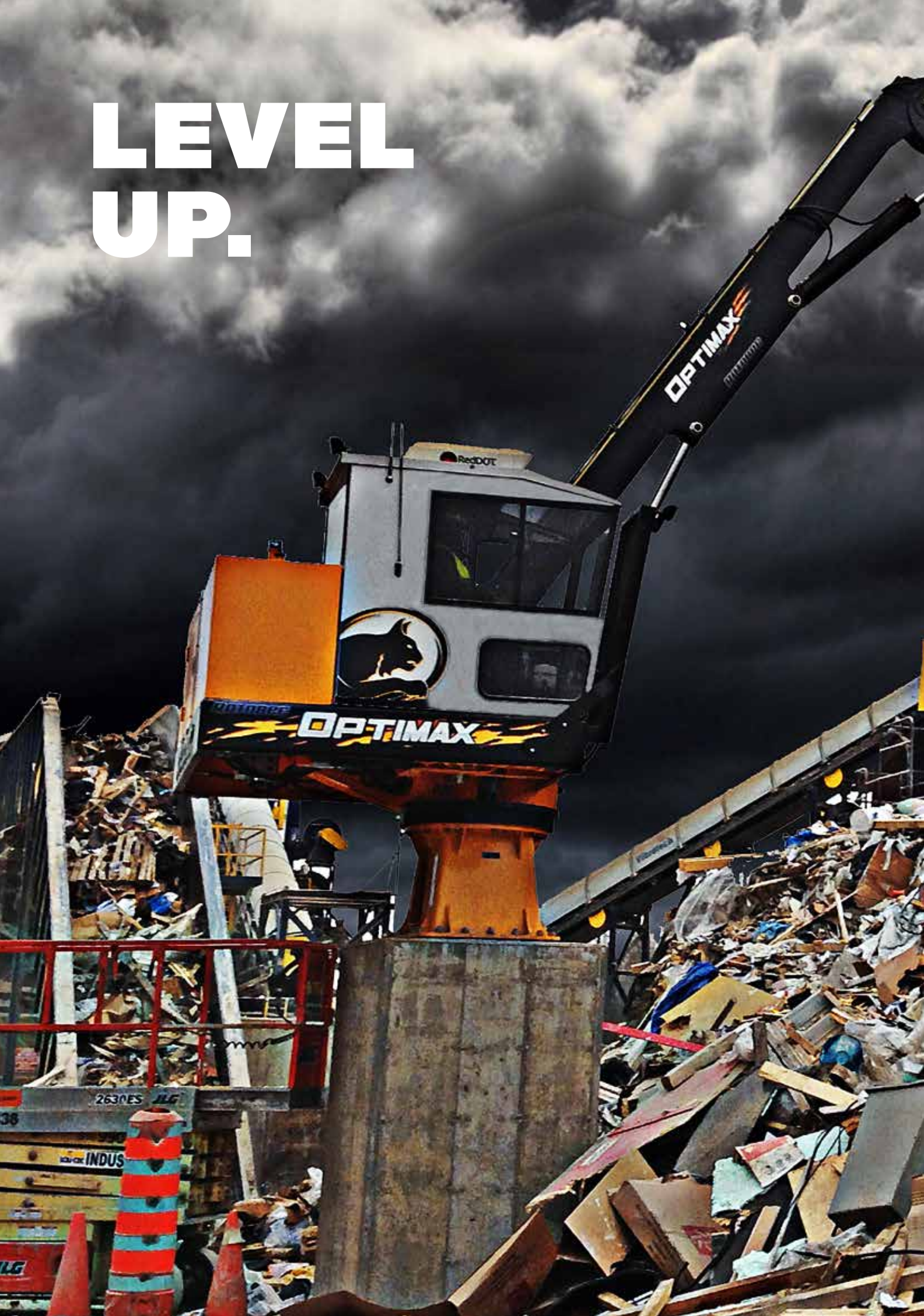
Stationary Mount Loaders are a key part of a mill yard's operations. We know they are an integral piece of equipment in the production chain. This is why we have designed all of them to be incredibly efficient to maximize your uptime and bottom line. We know your investment needs to last for the long haul, this is why Rotobec Stationary Mount Loader's durability is unsurpassed.

DEEPLY ROOTED IN FORESTRY



Our Stationary Mount Loaders family ranges from the little to the big brother: Elite SM, Horizon SM, Optimax SM, Evolution SM and Titan SM. Whether you need a smaller loader for speed and precision or need something in the heavy-duty category, we have them all. Increase your productivity with Rotobec.

LEVEL UP.





STOP WASTING TIME

Work smart for your trash handling needs with Rotobec Stationary Mount Loaders. Whether in sorting centers or transfer stations, you can count on our Stationary Mount Loaders for your agility and dexterity needs to stay consistent throughout your days.

We know how costly down-time can be, so we have designed our loaders with maximum productivity in mind. As versatile as they can be, they are also fully electric, saving you money on diesel and on maintenance costs with no need for oil changes.



HORIZON
1700000000

**BUILT
TO
SURPASS.**



FEARLESSLY HANDLING SCRAP

Handling scrap all day, every day? You need the high-quality design of a long lasting Rotobec Stationary Mount Loader to deal with tough material and to ensure your operator's comfort.

You won't find a bigger or more spacious cabin equipped with a comfort seat, insulated and giving great visibility. With 4 different configurations available in all 5 sizes, operating in 3 different market segments and first-class cylinders, the Rotobec loaders have all-around versatility.

To raise the bar even higher our service team goes above and beyond to make sure you are always on top of your game, backed by our engineering expertise, making you our first priority.

AVAILABLE CONFIGURATIONS

SM-X Power Unit: On loader | Operator Station: On loader



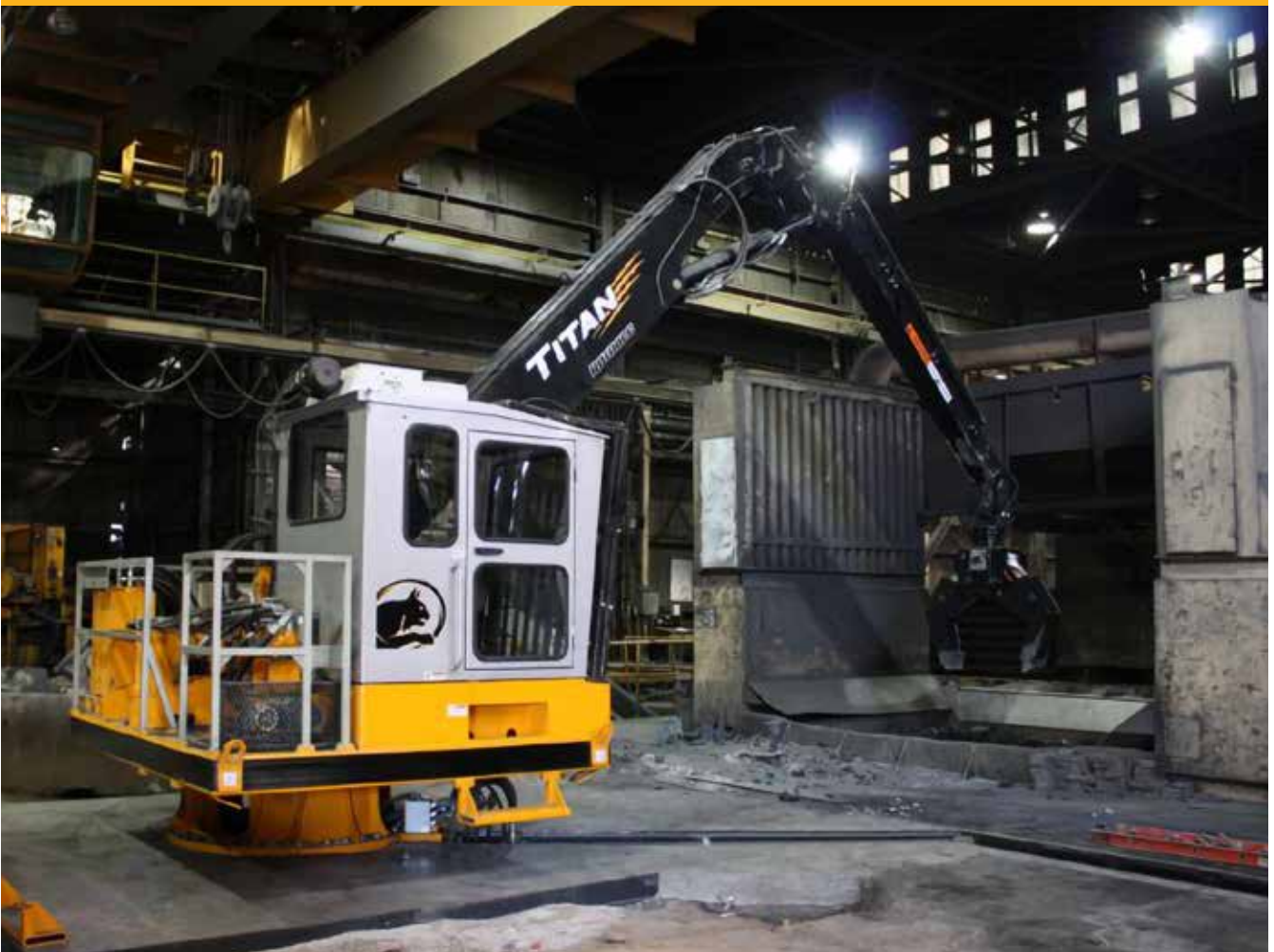
SM-W Power Unit: On loader | Operator Station: Remote



SM-R Power Unit: Remote | Operator Station: Remote



SM-H Power Unit: Remote | Operator Station: On loader



ELITE 910

TECHNICAL DATA

STATIONARY MOUNT SERIES LOADER KEY SPECIFICATIONS—ELITE 910 SM-M22

HYDRAULIC SYSTEM		BOOM	
Operating pressure	3,000 psi (207 bar)	Structure	Rectangular structure made of high tensile steel
Features	Double function joysticks Heavy duty hydraulic accumulator for structure protection	Pivots	2" (50 mm) dia. heat-treated and chromed pins mounted on bronze bushings
SWING SYSTEM		BOOM LENGTH OPTIONS	
Rotation	360°	Standard	22' (6.7 m)
Rotation speed	9.5 rpm	Non-telescopic	25', 27', 29' (7.6 m; 8.2 m; 8.8 m)
Slewing ring	27" (686 mm) outside dia.	OPERATOR STATION	
Features	Adjustable swing lock	Cab size	38" x 52" (965 mm x 1321 mm)
CYLINDERS		Front wipers w/fluid	Standard
Main boom	5" (127 mm) bore, 3" (76 mm) rod	4,000 W heater	Optional
Stick boom	5" (127 mm) bore, 3" (76 mm) rod	Air conditioning	Optional
Features	Chrome plated tempered steel rod Wear ring Bolt-on-head	Windshield protection guard	Optional
POWER UNIT			
Engine	40 hp (30 kW) high efficiency electric motor		
Features	600 v, 3 phase, 60 Hz Electric panel w/2 x 15A/120 v outlets Cut off switch Thermostat oil cooler 44 gal (167 l) oil tank		

ELITE 910 SM [M-22 ft. / M-6.7 m]

LOADER LIFT CAPACITY (lb/kg)

		DISTANCE FROM CENTER OF ROTATION (ft./m)			
HEIGHT		5 ft. / 1.5 m	10 ft. / 3 m	15 ft. / 4.5 m	20 ft. / 6 m
ELITE 910 SM	20 ft. / 6 m			3,460* / 1,995*	
	15 ft. / 4.5 m			5,180 / 2,365	
	10 ft. / 3 m		6,690 / 3,075	5,390 / 2,475	4,410 / 2,030
	5 ft. / 1.5 m	14,920 / 4,055**	8,120 / 3,740	5,780 / 2,660	4,360 / 2,015
	0 ft. / 0 m	3,730* / 1,635*	8,800 / 4,055	5,830 / 2,690	3,960 / 1,855
	-5 ft. / -1.5 m	6,260* / 2,775*	7,590 / 3,510	4,970 / 2,310	2,200 / 1,195

-Lifting capacities calculated at 100% operating pressure.

*Lifting capacity is limited by stick boom hydraulic capacity.

We reserve the right to change specifications and improve our products without notice or obligation.

HORIZON 920

TECHNICAL DATA

STATIONARY MOUNT SERIES LOADER KEY SPECIFICATIONS—HORIZON 920 SM

HYDRAULIC SYSTEM	
Operating pressure	3,200 psi (221 bar)
Features	Double function joysticks Heavy duty hydraulic accumulator for structure protection
SWING SYSTEM	
Rotation	360°
Rotation speed	8.8 rpm
Slewing ring	32" (813 mm) outside dia.
Features	Pedal activated rotation Adjustable swing lock (optional)
CYLINDERS	
Main boom	2 x 5" (127 mm) bore, 3" (76 mm) rod
Stick boom	6" (152 mm) bore, 4" (102 mm) rod
Features	Chrome plated tempered steel rod Wear ring Bolt-on-head
POWER UNIT	
Engine	50 hp (37 kW) high efficiency electric motor
Features	600 v, 3 phase, 60 Hz Electric panel w/2 x 15A/120 v outlets Cut off switch Thermostat oil cooler 99 gal (375 l) oil tank

BOOM	
Structure	Rectangular structure made of high tensile steel
Pivots	3" (76 mm) dia. heat-treated and chromed pins mounted on bronze bushings
BOOM LENGTH OPTIONS	
Standard	23' (7 m)
Non-telescopic	25', 27', 29' (7.6 m; 8.2 m; 8.8 m)
OPERATOR STATION	
Cab size	38" x 52" (965 mm x 1321 mm)
Front wipers w/fluid	Standard
4,000 W heater	Optional
Air conditioning	Optional
Windshield protection guard	Optional

HORIZON 920 SM [M-23 ft. / M-7 m]

LOADER LIFT CAPACITY (lb/kg)

		DISTANCE FROM CENTER OF ROTATION (ft./m)			
		5 ft. / 1.5 m	10 ft. / 3 m	15 ft. / 4.5 m	20 ft. / 6 m
HORIZON 920 SM	HEIGHT				
	25 ft. / 7.5 m		6,100* / 3,460		
	20 ft. / 6 m			5,650 / 2,540	
	15 ft. / 4.5 m			5,400 / 2,460	4,400* / 2,285
	10 ft. / 3 m		7,120 / 3,285	5,840 / 2,680	5,010 / 2,295
	5 ft. / 1.5 m		9,280 / 4,285	6,560 / 3,020	5,150 / 2,370
	0 ft. / 0 m	2,580* / 1,125*	10,550 / 4,865	6,970 / 3,215	5,060 / 2,345
	-5 ft. / -1.5 m	5,910* / 2,620*	9,810 / 4,525	6,500 / 3,010	4,100 / 1,960
-10 ft. / -3 m		6,930 / 3,240	4,390 / 2,095		

-Lifting capacities calculated at 100% operating pressure.

*Lifting capacity is limited by stick boom hydraulic capacity.

We reserve the right to change specifications and improve our products without notice or obligation.

OPTIMAX 950

TECHNICAL DATA

STATIONARY MOUNT SERIES LOADER KEY SPECIFICATIONS—OPTIMAX 950 SM

HYDRAULIC SYSTEM		BOOM	
Operating pressure	3,200 psi (221 bar)	Structure	Rectangular structure made of high tensile steel
Features	Variable displacement piston pump Double function joysticks	Pivots	3" (76 mm) dia. heat-treated and chromed pins mounted on bronze bushings
SWING SYSTEM		BOOM LENGTH OPTIONS	
Rotation	360°	Standard	27' (8.2 m)
Rotation speed	8.5 rpm	Non-telescopic	30' (9.1 m)
Slewing ring	38" (965 mm) outside dia.	OPTIONS	
Features	Pedal activated rotation Dual swing motor 35 cc and reducing gear box Limited rotation (optional)	Booms	Live/Dead heel for tree length wood All LED lights All Halogen lights
CYLINDERS		OPERATOR STATION	
Main boom	7" (178 mm) bore, 4" (102 mm) rod	Cab size	48" x 60" (1219 mm x 1524 mm)
Stick boom	6" (152 mm) bore, 3" (76 mm) rod	Front wipers w/fluid	Standard
Features	Chrome plated tempered steel rod Wear ring Bolt-on-head Cylinder protectors (optional)	4,000 W heater	Standard
POWER UNIT		Air conditioning	Standard
Motor	75 hp (56 kW) high efficiency electric motor	Windshield protection guard	Optional
Features	600 v, 3 phase, 60 Hz Electric panel w/2 x 15A/120 v outlets Cut off switch Thermostat oil cooler 100 gal (375 l) oil tank	Pressurized cab	Optional

OPTIMAX 950 SM [M-27 ft. / M-8.2 m]

LOADER LIFT CAPACITY (lb/kg)

		DISTANCE FROM CENTER OF ROTATION (ft./m)			
HEIGHT		10 ft. / 3 m	15 ft. / 4.5 m	20 ft. / 6 m	25 ft. / 7.5 m
OPTIMAX 950 SM	25 ft. / 7.5 m		12,460 / 5,630		
	20 ft. / 6 m		12,010 / 5,485	10,980 / 5,000	
	15 ft. / 4.5 m		12,840 / 5,900	11,150 / 5,110	8,600* / 4,505
	10 ft. / 3 m	15,580* / 7,120*	14,510 / 6,690	11,750 / 5,405	9,810 / 4,520
	5 ft. / 1.5 m	24,220 / 10,625*	16,150 / 7,445	12,290 / 5,665	9,670 / 4,475
	0 ft. / 0 m	13,190* / 5,590*	16,560 / 7,635	12,180 / 5,625	8,780 / 4,130
	-5 ft. / -1.5 m	18,310* / 7,935*	14,980 / 6,925	10,720 / 4,990	
	-10 ft. / -3 m		10,790 / 5,060		

-Lifting capacities calculated at 100% operating pressure.

*Lifting capacity is limited by stick boom hydraulic capacity.

We reserve the right to change specifications and improve our products without notice or obligation.

EVOLUTION 960 / 970

TECHNICAL DATA

STATIONARY MOUNT SERIES LOADER KEY SPECIFICATIONS—EVOLUTION 960 SM / EVOLUTION 970 SM

HYDRAULIC SYSTEM

Operating pressure	4,200 psi (290 bar)
Features	Variable displacement piston pump Heavy duty hydraulic accumulator for structure protection

SWING SYSTEM

Rotation	360°
Rotation speed	8 rpm
Slewing ring	960: 45" (1143 mm) outside dia. 970: 63" (1600 mm) outside dia.
Features	Joystick activated rotation Pedal activated rotation (optional) Limited rotation (optional)

CYLINDERS

Main boom	960: 2 x 5" (127 mm) bore, 3" (76 mm) rod 970: 2 x 5.5" (140 mm) bore, 3.5" (89 mm) rod
Stick boom	960: 6" (152 mm) bore, 3 1/2" (89 mm) rod 970: 2 x 5" (127 mm) bore, 3" rod (76 mm)
Features	Chrome plated tempered steel rod Wear ring Dual cylinders on main boom

POWER UNIT

Motor	960: 100 hp (75 kW) high efficiency electric motor 970: 125 hp (93 kW) high efficiency electric motor
Features	600 v, 3 phase, 60 Hz Electric panel w/2 x 15A/120 v outlets Cut off switch Thermostat oil cooler 960: 100 gal (379 l) oil tank 970: 150 gal (568 l) oil tank

BOOM

Structure	Rectangular structure made of high tensile steel
Pivots	3 1/2" (89 mm) dia. heat-treated and chromed pins mounted on bronze bushings

BOOM LENGTH OPTIONS

Standard	960: 32' (9.8 m) 970: 36' (11.0 m)
Non-telescopic	960: 27'; 36' (8.2 m; 11.0 m) 970: 40' (12.2 m)

OPTIONS

Booms	Live/Dead heel for tree length wood All LED lights All halogen lights
-------	---

OPERATOR STATION

Cab size	48" x 60" (1219 mm x 1524 mm)
Front wipers w/fluid	Standard
4,000 W heater	Standard
Air conditioning	Standard
Windshield protection guard	Optional
Pressurized cab	Optional

EVOLUTION 960 SM [M-32 ft. / M-9.75 m]

LOADER LIFT CAPACITY (lb/kg)

		DISTANCE FROM CENTER OF ROTATION (ft./m)				
		10 ft. / 3 m	15 ft. / 4.5 m	20 ft. / 6 m	25 ft. / 7.5 m	30 ft. / 9 m
EVOLUTION 960 SM	HEIGHT					
	30 ft. / 9 m			10,900* / 5,500*		
	25 ft. / 7.5 m			12,180 / 5,535	9,140* / 4,800*	
	20 ft. / 6 m			12,370 / 5,660	11,500 / 5,245	
	15 ft. / 4.5 m		15,500 / 7,145	13,310 / 6,115	11,840 / 5,425	8,560* / 4,590*
	10 ft. / 3 m	26,420 / 12,285	18,430 / 8,515	14,670 / 6,755	12,440 / 5,715	10,830 / 4,980
	5 ft. / 1.5 m	13,670* / 5,655*	21,190 / 9,790	15,970 / 7,360	12,990 / 5,980	10,830 / 5,005
	0 ft. / 0 m	11,080* / 4,820*	22,450 / 10,355	16,620 / 7,665	13,140 / 6,065	10,360 / 4,835
	-5 ft. / -1.5 m	14,350* / 6,325*	21,680 / 10,000	16,170 / 7,470	12,460 / 5,780	
	-10 ft. / -3 m		18,770 / 8,690	14,120 / 6,565		

EVOLUTION 970 SM [M-36 ft. / M-10.97 m]
LOADER LIFT CAPACITY (lb/kg)

		DISTANCE FROM CENTER OF ROTATION (ft./m)					
		10 ft. / 3 m	15 ft. / 4.5 m	20 ft. / 6 m	25 ft. / 7.5 m	30 ft. / 9 m	35 ft. / 10.6 m
EVOLUTION 970 SM	HEIGHT						
	35 ft. / 10.6 m			12,330* / 6,725*			
	30 ft. / 9 m			15,500 / 7,010	13,190* / 6,655*		
	25 ft. / 7.5 m			15,110 / 6,890	14,290 / 6,505	9,480* / 5,380*	
	20 ft. / 6 m			15,810 / 7,250	14,520 / 6,645	13,570 / 6,195	
	15 ft. / 4.5 m		20,610 / 9,525	17,410 / 8,015	15,320 / 7,035	13,830 / 6,340	
	10 ft. / 3 m	37,790 / 17,640	25,140 / 11,645	19,580 / 9,030	16,410 / 7,550	14,310 / 6,575	11,280* / 5,810
	5 ft. / 1.5 m		29,410 / 13,605	21,650 / 9,995	17,450 / 8,040	14,740 / 6,790	12,500 / 5,795
	0 ft. / 0 m	7,990* / 3,020*	29,510 / 12,440	22,880 / 10,560	18,060 / 8,330	14,850 / 6,855	11,330* / 5,585
	-5 ft. / -1.5 m	11,280* / 4,965*	26,630 / 11,500	22,760 / 10,510	17,830 / 8,240	14,270 / 6,625	
-10 ft. / -3 m		27,590 / 12,745	21,020 / 9,725	16,380 / 7,610	12,360 / 5,830		

-Lifting capacities calculated at 100% operating pressure.

*Lifting capacity is limited by stick boom hydraulic capacity.

We reserve the right to change specifications and improve our products without notice or obligation.

TITAN 980

TECHNICAL DATA

STATIONARY MOUNT SERIES LOADER KEY SPECIFICATIONS—TITAN 980 SM

HYDRAULIC SYSTEM		BOOM	
Operating pressure	4,200 psi (290 bar)	Structure	Rectangular structure made of high tensile steel
Features	Double function joysticks Variable displacement piston pump Heavy duty hydraulic accumulator for structure protection	Pivots	3 1/2" (89 mm) and 4" (102 mm) dia. heat-treated and chromed pins mounted on bronze bushings
SWING SYSTEM		BOOM LENGTH OPTIONS	
Rotation	360°	Standard	38' (11.6 m)
Rotation speed	8 rpm	Optional	34'; 46' (10.4 m; 14.0 m)
Slewing ring	63" (1600 mm) outside dia.	Live Heel boom	40' (12.2 m)
Features	Pedal activated rotation Limited rotation (optional)	OPTIONS	
CYLINDERS		Booms	Live/Dead heel for tree length wood All LED lights All halogen lights
Main boom	2 x 5 1/2" (140 mm) bore, 3 1/2" (89 mm) rod	OPERATOR STATION	
Stick boom	2 x 5 1/2" (140 mm) bore, 3 1/2" (89 mm) rod	Cab size	48" x 60" (1219 mm x 1524 mm)
Features	Chrome plated tempered steel rod Wear ring Dual cylinders on main boom	Front wipers w/fluid	Standard
POWER UNIT		4,000 W heater	Standard
Engine	150 hp (112 kW) high efficiency electric motor	Air conditioning	Standard
Features	600 v, 3 phase, 60 Hz Electric panel w/2 x 15A/120 v outlets Cut off switch Thermostat oil cooler 150 gal (568 l) oil tank	Windshield protection guard	Optional
		Pressurized cab	Optional

TITAN 980 SM [M-38 ft. / M-11.5 m]

LOADER LIFT CAPACITY (lb/kg)

		DISTANCE FROM CENTER OF ROTATION (ft./m)					
HEIGHT		10 ft. / 3 m	15 ft. / 4.5 m	20 ft. / 6 m	25 ft. / 7.5 m	30 ft. / 9 m	35 ft. / 10.6 m
OPTIMAX 950 SM	40 ft. / 12.2 m			17,028* / 7,740*			
	35 ft. / 10.6 m				16,687* / 7,585*		
	30 ft. / 9 m				18,744 / 8,520	14,828* / 6,740*	
	25 ft. / 7.5 m				18,942 / 8,610	17,094 / 7,770	
	20 ft. / 6 m			22,660 / 10,300	19,613 / 8,915	17,358 / 7,890	14,773* / 6,715*
	15 ft. / 4.5 m		30,844 / 14,020	24,552 / 11,160	20,592 / 9,360	17,798 / 8,090	15,565 / 7,075
	10 ft. / 3 m		34,936 / 15,880	26,532 / 12,060	21,582 / 9,810	18,227 / 8,285	15,565 / 7,075
	5 ft. / 1.5 m		37,532 / 17,060	27,896 / 12,680	22,220 / 10,100	18,370 / 8,350	15,268 / 6,940
	0 ft. / 0 m	9,603* / 4,635*	29,810* / 13,550*	27,962 / 12,710	22,088 / 10,040	17,930 / 8,150	14,322 / 6,510
	-5 ft. / -1.5 m		28,314* / 12,870*	26,279 / 11,945	20,757 / 9,435	16,467 / 7,485	

-Lifting capacities calculated at 100% operating pressure.

*Lifting capacity is limited by stick boom hydraulic capacity.

We reserve the right to change specifications and improve our products without notice or obligation.

COMMON ATTACHMENTS USED WITH SM LOADERS



LOG GRAPPLE



COMBINATION GRAPPLE



BUNCHING GRAPPLE



RPA - TRASH



RPA - TRASH COMPACTION



ORANGE PEEL



ROTOBEC

ROTOBEC

■ At Rotobec, we are not (and will never be) afraid to say it out loud: **we are the best!**

The reason is simple. Just like you, we have earned this position. And just like you, we work hard every single day to keep it. From dawn to dusk. Just like you, we know that the best things in life are tough earned.

That's why we never take anything for granted; a reputation, the number of fans on Facebook, a safe place in the industry, the trust of the dealers, the satisfaction of the customers, the comfort of the team, the perfection of a piece of equipment. It's about giving it our all and raising the bar. Doing better, pushing harder, going further.

That is how we achieve to build the most trustworthy equipment and relationships in the business. Why accept less? **You deserve what's best.** The industry deserves what's best. The world deserves what's best.

So together, let's aim higher. If it doesn't exist, we'll create it. We can do better, let's do it. When the horizon gets tough, we keep going.

We are Rotobec!



ROTOBEC



CONTACT US

Eastern Canada & International

200 rue Industrielle
Sainte-Justine, QC CANADA
G0R 1Y0
T. (418) 383-3002

Eastern & Central USA

162 Rotobec Drive
Littleton, NH USA
03561
T. (603) 444-2103

Southern USA

1225 E Crosby Rd #17
Carrollton, TX USA
75006
T. (972) 242-9514

Western Canada & USA

10-2660 Kyle Rd
West Kelowna, BC CANADA
V1Z 2N1
T. 1-888-551-0585

Brazil

Rua Carlos Essenfelder, 952
Bairro Boqueirão, Curitiba Paraná
CEP 81650-090
T. (41) 3287-2835